



# Harit Sanjivani Crop Schedule

## Crop: Strawberry

Transplanting time: September to October, January to February, March to April, Duration of harvest: harvesting of fruits started from 85 to 90 days according to variety

### How to apply Harit Sanjivani Products for Nursery

Per nursery plant apply in soil **Garden gold 25 gm + Soil Health Special 5 gm**. Nursery plant in 20 to 25 days after sowing take spray **Rapid 2 ml + Defend 2 gm + Fruit special 1 gm + Spray Max-85 1 ml** (per liter of water). After this, spray the same every 15 days interval as per need.

After transplanting **Defend 2 gm + Metalaxyle 35% 1.5 gm + Spray Max-85 1 ml** per liter of water apply in drenching.

Products of Harit Sanjivani	Time & Methods of Application
<b>Harit Sanjivani stage 1 250 gm + Soil Health Special 500 gm</b> (Per acre)	While transplanting or up to 30 days from transplanting apply in soil mixing with any chemical fertilizer or organic manure or in 40 to 50 kg dry soil or through drip irrigation or drenching.
<b>Harit Sanjivani stage 2 + Spray Max-85 1ml per liter of water</b> <b>Rapid</b> <b>Defend</b>	Spraying should be done in 25 to 30 days after transplanting (Growth stage of plants) Rapid 2 ml per liter of water for sucking pest Defend 2 gm per liter of water to prevent fungal diseases
<b>Harit Sanjivani stage 3 + Spray Max-85 1ml per liter of water</b> <b>Rapid</b> <b>Defend</b>	Spraying should be done in 15 days after spraying Harit Sanjivani stage 2. (Flowering stage) Rapid 2 ml per liter of water for sucking pest Defend 2 gm per liter of water to prevent fungal diseases
<b>Harit Sanjivani stage 4 + Spray Max-85 1ml per liter of water</b> <b>Rapid</b> <b>Defend</b>	Spraying should be done in 15 days after spraying Harit Sanjivani stage 3. (Fruit development stage) Rapid 2 ml per liter of water for sucking pest Defend 2 gm per liter of water to prevent fungal diseases
<b>Harit Sanjivani Fruit</b>	In the growth stage of fruits after spraying of Harit



# Harit Sanjivani Crop Schedule

<b>Special 2 gm + Spray Max-85 1 ml per liter of water</b> <b>Rapid</b> <b>Defend</b>	Sanjivani stage 4, spraying should be done in every 15 to 20 days interval. Rapid 2 ml per liter of water for sucking pest Defend 2 gm per liter of water to prevent fungal diseases
<b>Harit Sanjivani Soil Health</b> <b>Special 500 gm</b> (Per acre)	In the growth stage of fruits, apply in soil by mixing with any chemical fertilizer or organic manure or in 40 to 50 kg dry soil or through drip irrigation or drenching.
<b>Spray Max-85 can give 500 ml per acre by drip irrigation or drenching.</b>	



## Time and dose of Nutrients application

### While transplanting: (Volume per acre)

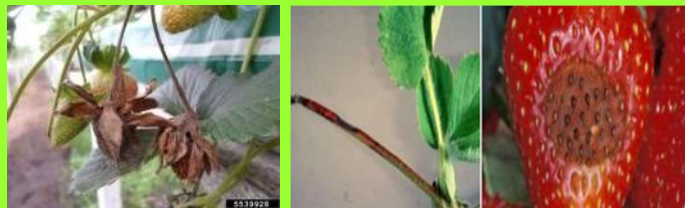
- 1) Phosphorus 35 kg
- 2) 20 to 25 days from transplanting Nitrogen 22 kg
- 3) In flowering stage, Nitrogen 22 kg, Potash 44 kg

### Micronutrients: - (Volume per acre)

1. Mix micronutrient 20 kg with 20 kg of cow dung or compost.
2. For root knot nematodes, Neem powder is used in the quantity of 500 kg.
3. Organic fertilizers like Trichoderma, Pseudomonas, Phosphorus soluble bacteria, Azotobacter mixed with 1 kg of dung or compost manure.

Strawberry diseases and treatment	Strawberry diseases and treatment
<b>Fungus:</b> <b>1) Leaf spot</b>  <b>Treatment :</b> Spraying (volume per liter) <b>Defend 2 gm + Metalaxyle (+) Mancozeb 2 gm + Spray Max-85 1 ml</b>	<b>2) Gray mould</b>  <b>Treatment :</b> Spraying (volume per liter) <b>Defend 2 gm + Hexaconazole (+) Zenab 2 gm + Spray Max-85 1 ml</b>

### 3) Anthracnose



**Treatment :** Spraying (volume per liter)  
**Defend 2 gm** + Hexaconazole (+) Captan 2 gm + **Spray Max-85** 1 ml

### 4) Powdery mildew



**Treatment :** Spraying (volume per liter)  
**Defend 2 gm** + Hexaconazole 1 ml + **Spray Max-85** 1 ml

### 5) Root rot / wilt

**Treatment :** Spraying (volume per liter)  
**Defend 2 gm** + Metalaxyle 35% 1 gm + **Spray Max-85** - 1 ml

**Drenching:** (Volume per liter)

Copper oxychloride 3 gm + Validamycin 2 ml + **Spray Max-85** 1 ml



### Bacterial: Angular leaf spot

**Treatment :** Spraying (volume per liter)  
 (By drip irrigation or by drenching use in soil **Fruit Special 1 kg** per acre.)

1) **Defend 2 gm** + Captan 2 gm + Strepto Cycline 6 gm / 50 L + **Spray Max-85** 1 ml

2) Copper oxychloride - 2 gm + strepto cycline 6 gm / 50 L + **Spray Max-85** 1 ml



### Sucking pest:

Thrips



White Fly



Aphids



Red mites



**Treatment :** (volume per liter): **Rapid 2 ml** + **Spray Max-85** 1 ml

### Pest:

Army warm,  
 Loppers, bitels  
 Shoot Fly (Golden

### Insecticide: (Volume per liter of water)

Emamectin 1 gm + dichlorvose 1 ml + **Spray Max-85** 1 ml

Barazide 3 ml + Dichlorvos 1 ml + **Spray Max-85** 1 ml

Rapid 1 ml + Phenpropathrin 1 ml + Dichlorvos 1 ml + **Spray**



# Harit Sanjivani Crop Schedule

Fly)

**Max-85** 1 ml

**Root knot nematode: Treatment :** (volume per acre)

Trichoderma 1 kg + paecilomyces 1 kg + black jaggery 2 kg (mix all three in 10 liters of clean water and keep in a plastic bucket or plastic vessel a day)

On the second day, mix Soil Health Special 500 gm in 200 liters of water and mix the top 10 liters of draining in it and drenching in the roots of plants or by drip irrigation.

## Instructions :

- 1) **Harit Sanjivani stage 2, 3, 4, Fruit special, Defend** can be mixed with any insecticides, pesticides, fungicides except only alkaline such as Copper, Sulphour, Bordeaux mixture.
- 2) In every spraying apply **Spray Max-85** in the ratio of 1 ml per liter.
- 3) **After the 5<sup>th</sup> spray of Fruit special** as per the need to increase the size of the fruits in an interval of 25 days apply **Fruit Special** at a ratio of 2 gm per liter in spraying.

**(For Strawberry crop schedule given by field trials, farmers experience and agricultural universities trials and the schedule can be change according to soil type and environment)**