



Harit Sanjivani Crop Schedule

Crop: Papaya

Transplanting time: June to July, September, February to March, Duration of harvest:
240 to 290 days

How to apply Harit Sanjivani Products

Plantation: While transplanting papaya drenching of Defend 3 gm + Spray Max 1 ml per liter of water solution in plant roots.

Products of Harit sanjivani	Time & Method of Application
Harit Sanjivani Soil Health Special 2 pouches of 500 gm (Dose per acre)	While planting papaya or after transplanting up to 30 days apply in soil by mixing with any chemical fertilizer or organic manure or in 40 to 50 kg dry soil or through drip irrigation or drenching.
Harit Sanjivani Fruit Special 1 gm + Spray Max-85 1 ml per liter of water Rapid Defend	Spraying should be done in 15 to 30 days after transplanting. (Vegetative growth stage of plants) Rapid 2 ml per liter of water for sucking pest Defend 2 gm per liter of water to prevent fungal disease
After this spraying, spray Fruit special 1 to 2 gm + Spray max-85 1 ml per liter of water in every 25 to 30 days interval in plant growth condition. It can be sprayed by mixing with Rapid 2 ml and Defined 2 gm per liter of water as per the requirements.	
Harit Sanjivani Fruit Special 1 gm + Spray Max-85 1 ml per liter of water Rapid Defend	Spraying should be done in stage of initiation of flowering. (Flowering Stage) Rapid 2 ml per liter of water for sucking pest Defend 2 gm per liter of water to prevent fungal disease
Harit Sanjivani Fruit Special 2 gm + Spray Max-85 1ml per liter of water Rapid Defend	Spraying should be done in conversion of flowering into fruits. (Fruit Setting Stage) Rapid 2 ml per liter of water for sucking pest Defend 2 gm per liter of water to prevent fungal disease
2 pouches of Harit Sanjivani Soil Health Special 500 gm	In the Fruit setting stage (conversion of flowers into fruits), apply in soil by mixed with any chemical or



Harit Sanjivani Crop Schedule

(Per acre)	organic manure or in 40 to 50 kg dry soil or through drip irrigation or drenching.
Harit Sanjivani Fruit Special 2 gm + Spray Max-85 1ml per liter of water	Spraying should be done in the fruit development stage. (Fruit development stage)
Rapid	Rapid 2 ml per liter of water for sucking pest
Defend	Defend 2 gm per liter of water to prevent fungal disease
After this spraying, in the growth stage of the fruits, spray in every 20 to 25 days intervals Fruit special 2 gm + Spray max-85 1 ml per liter of water. It can be sprayed by mixing with Rapid 2 ml and Defend 2 gm per liter of water as per the requirements.	
Spray Max-85 can give 500 ml per acre through drip irrigation or drenching.	

Time and Dose of Nutrients

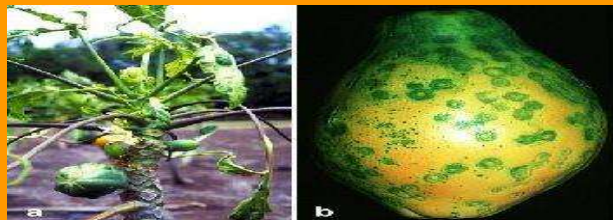
Tree age	Cow dung / compost manure (kg) (per plant)	Nitrogen (gm) (per plant)	Phosphorus (gm) (per plant)	Potash (gram) (per plant)
At the time of planting	10	200	200	200
90 days from transplanting		50	50	50
150 days from transplanting	20	50	50	50
210 days from transplanting		50	50	50

Micronutrients: -

1. Mix micronutrients by mixing 25 grams per tree with cow dung or compost manure.
2. For root knot nematodes, Neem powder should be used in 500 gm per tree.
3. Organic fertilizers such as Trichoderma, Pseudomonas, phosphorus soluble bacteria, Azotobacter, mix 25 grams per tree with cow dung or compost manure.

Papaya diseases and remedies	Papaya diseases and remedies
<p>Fungus:</p> <p>1) Foot rot</p>  <p>Treatment : Spraying on leaves and foots (volume per liter) Defend 2 gm + Metalaxyle 35% 1 gm + streptocycline 6 gm / 50 L + Spray Max-85 1 ml Drenching: Copper oxychloride 3 gm + Spray Max-85 1 ml</p>	<p>2) Anthracnose</p>  <p>Treatment : Spraying (volume per liter) Defend 2 gm + Captan 2 gm + Spray Max-85 1 ml</p>
<p>3) Power Mildew</p>  <p>Treatment : Spraying (volume per liter) Defend 2 gm + Azoxystrobin 1 ml + Spray Max-85 1 ml</p>	<p>4) Downy Mildew</p>  <p>Treatment : Spraying (volume per liter) Defend 2 gm + Hexaconazole (+) Captan 2 gm + Spray Max-85 1 ml</p>
<p>5) Cercospora black spot</p> <p>Treatment : Spraying (volume per liter) Defend 2 gm + Hexaconazole (+) Zenab 2 gm + Spray Max-85 1 ml</p>	
<p>Viral Infections :</p> <p>Viral infection occurring in different crops is mainly due to sucking pest or because of the lack of nutrients in leaves. Therefore, pay special attention to the amount of sucking pest in the crops and the amount of nutrients in the leaves. If any type of virus appears on the plants in the plot, immediately destroy the infected plants.</p>	

Viral:1) Papaya Ring Spot



Treatment : Spraying (volume per liter)

Rapid 2 ml + Acephate 1.5 gm + **Defend** 2 gm + **Spray Max-85** - 1 ml

2 days after this spraying

Fruit special 2 gm + 13:00:45 - 5 gm + **Spray Max-85** - 1 ml

2) Papaya mosaic / leaf curl



Treatment : Spraying (volume per liter)

Rapid 2 ml + Acephate 1.5 gm + **Defend** 2 gm + **Spray Max-85** - 1 ml

2 days after this spraying

Fruit special 2 gm + 13:00:45 - 5 gm + **Spray Max-85** - 1 ml

Bacterial Canker :

Treatment : Spraying (volume per liter)

(Through drip irrigation or drenching **Fruit Special** 1 kg apply in soil per acre.)

1) **Defend** 2 gm + Captan - 2 gm + streptocycline 6 gm / 50 L + **Spray Max-85** 1 ml

2) Copper oxychloride - 2 gm + Streptocycline 6 gm / 50 L + **Spray Max-85** 1 ml



Sucking pest:

Thrips

Aphids, Jassids,

Red mites,

White fly,

Grass Hooper



Treatment : (Volume per liter): **Rapid** 2 ml + **Spray Max-85** 1 ml

Mealy Bug:

Treatment : (Volume per liter)

Rapid 1.5 ml + Clothianidin (Dantotsu) 0.4 gm + **Spray Max-85** 1 ml



Pest:

Fruit borer

Fruit fly (golden fly)

Insecticide:(Volume per liter of water)

Emamectin 1 gm + dichlorvose 1 ml + **Spray Max-85** 1 ml

Rapid 1 ml + phenpropathrin 1 ml + dichlorvos 1 ml + **Spray Max-**



Harit Sanjivani Crop Schedule

Fruit Sucking Moth (Kite)	85 1 ml

Instructions :

- 1) **Harit Sanjivani Fruit Special, Defend** can be mixed with any insecticides, pesticides, fungicides except only alkaline such as Copper, Sulphour, Bordeaux mixture.
- 2) In every spraying apply **Spray Max-85** in the ratio of 1 ml per liter.
- 3) **After the 5th spray of Fruit special** as per the need to increase the size of the fruits in an interval of 25 days apply **Fruit Special** at a ratio of 2 gm per liter in spraying.

(For papaya crop schedule given by field trials, farmers experience and agricultural universities trials and the schedule can be change according to soil type and environment)