



# Harit Sanjivani Crop Schedule

## Crop: Banana

**Transplanting time:** June to July, October to November, February, Duration of harvest:  
300 to 330 days (according to variety)

### How to apply Harit Sanjivani Products

**While transplanting banana, prepare a solution of Defend 3 gm + Spray Max-85 1 ml per liter of water & drench it in the roots of the plants.**

Products of Harit Sanjivani	Time & Methods of Application
<b>2 pouches of Harit Sanjivani Soil Health Special 500 gm</b> (Per acre)	While transplanting or after transplanting up to 30 days apply in soil by mixing with any chemical fertilizer or Organic manure or in 40 to 50 kg of dry soil or through drip irrigation or drenching.
<b>Harit Sanjivani Fruit Special 1 gm + Spray Max-85 1 ml per liter of water</b> <b>Rapid</b> <b>Defend</b>	Spraying should be done after 15 to 30 days from transplanting. (Vegetative growth stage of plants) Rapid 2 ml per liter of water for sucking pest Defend 2 gm per liter of water to prevent fungal diseases
After this spraying, spray Fruit special 1 to 2 gm + Spray max-85 1 ml per liter of water every 25 to 30 days in plant growth condition. It can be sprayed by mixing Rapid 2 ml and Defined 2 gm per liter of water as per the requirements.	
<b>Harit Sanjivani Fruit Special 2 gm + Spray Max-85 1 ml per liter of water</b> <b>Rapid</b> <b>Defend</b>	Spray in Pong filling stage in 90 days after transplanting Banana. (Pong filling stage) Rapid 2 ml per liter of water for sucking pest Defend 2 gm per liter of water to prevent fungal diseases
<b>2 pouches of Harit Sanjivani Soil Health Special 500 gms</b> (Per acre)	At the stage of Pong filling apply in soil by mixing with any chemical fertilizer or organic manure or in 40 to 50 kg dry soil or through drip irrigation or drenching.
After this spraying, spray Fruit special 1 to 2 gm + Spray max-85 1 ml per liter of water every 25 to 30 days in plant growth condition. It can be sprayed by mixing Rapid 2 ml and Defined 2 gm per liter of water as per the requirements.	



# Harit Sanjivani Crop Schedule

<b>Harit Sanjivani Fruit Special 1 gm + Spray Max-85 1 ml per liter of water</b> <b>Rapid</b> <b>Defend</b>	Spraying should be done in Lotus (Flowering) initiation stage.  Rapid 2 ml per liter of water for sucking pest Defend 2 gm per liter of water to prevent fungal diseases
<b>Harit Sanjivani Fruit Special 2gm + Spray Max-85 1ml per liter of water</b> <b>Rapid</b> <b>Defend</b>	Spraying should done in conversion of Lotus (Flowering) into fruits setting. (Fruit Setting Stage) Rapid 2 ml per liter of water for sucking pest Defend 2 gm per liter of water to prevent fungal diseases
After this spraying, in the growth stage of the fruit, spray every 20 to 25 days intervals Fruit special 2 gm + Spray max-85 1 ml per liter of water. It can be sprayed by mixing Rapid 2 ml and Defined 2 gm per liter of water as per the requirements.	
<b>Spray Max-85 can give 500 ml per acre by drip irrigation or drenching.</b>	

## Time and Dose of Nutrients

Tree age	Cow dung / compost manure (kg) (per plant)	Nitrogen (gm) Quantity per plant	Phosphorus (gm) Quantity per plant	Potash (gm) Quantity per plant
At the time of transplanting	10	200	60	200
Pong Filling stage	20	300	250	400

### **Micronutrients: -**

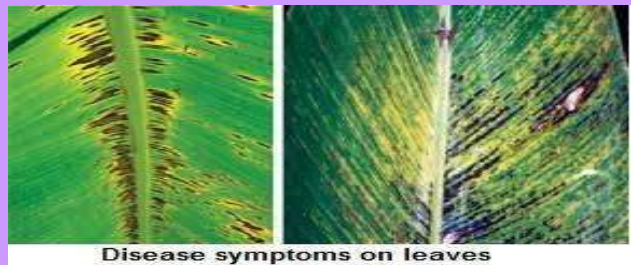
1. Mix micronutrients 25 gm per plant by mixing with cow dung or compost manure.
2. For root knot nematodes, use Neem powder 500 gm per tree.
3. Organic fertilizers such as Trichoderma, Pseudomonas, Phosphorus soluble bacteria, Azotobacter, mix 25 gm per tree with cow dung or compost manure.

Banana diseases and remedies	Banana diseases and remedies
<p><b>Fungus: 1) Panama wilt</b></p>  <p><b>Treatment :</b> Spraying on leaves and foots (volume per liter)  <b>Defend 2 gm</b> + Metalaxyle 35% 1.5 gm + <b>Spray Max-85</b> 1 ml  <b>Drenching:</b> (volume per liter)  Copper oxychloride - 2 gm + <b>Spray Max-85</b> 1 ml</p>	<p><b>2) Mycosphaerella leaf spot (Yellow sigatoka, Black sigatoka)</b></p>  <p><b>Treatment :</b> Spraying (volume per liter)  <b>Defend 2 gm</b> + Hexaconazole (+) Zenab 2 gm + <b>Spray Max-85</b> 1 ml</p>
<p><b>3) Anthracnose</b></p> <p><b>Treatment :</b> Spraying (volume per liter)  <b>Defend 2 gm</b> + Hexaconazole (+) Captan 2 gm + <b>Spray Max-85</b> 1 ml</p> 	
<p><b>Viral Infections:</b> Viral infection occurring in different crops is mainly due to sucking pest or because of the lack of nutrients in the leaves. Therefore, pay special attention to the amount of sucking pest in the crops and the amount of nutrients in the leaves. If any type of virus appears on the plants in the plot, immediately destroy the infected plants.</p>	
<p><b>Viral:</b></p> <p><b>1) Bunchy Top / Curly Top</b></p>  <p><b>Treatment :</b> Spraying (volume per liter)  <b>Rapid</b> 2 ml + Acephate 1.5 gm + <b>Defend</b> 2 gm + <b>Spray Max-85</b> - 1 ml  After 2 days of this spraying take 2<sup>nd</sup> spray</p>	<p><b>2) Banana Streak Mosaic</b></p>  <p><b>Treatment :</b> Spraying (volume per liter)  <b>Rapid</b> 2 ml + Acephate 1.5 gm + <b>Defend</b> 2 gm + <b>Spray Max-85</b> - 1 ml  After 2 days of this spraying take 2<sup>nd</sup> spray</p>



**Fruit special** 2 gm + 13:00:45 - 5 gm + **Spray Max-85** - 1 ml

**3) Banana streak virus**  
**Treatment :** Spraying (volume per liter)  
**Rapid** 2 ml + Acephate 1.5 gm + **Defend** 2 gm  
 + **Spray Max-85** - 1 ml  
 After 2 days of this spraying take 2<sup>nd</sup> spray  
**Fruit special** 2 gm + 13:00:45 - 5 gm + **Spray Max-85** - 1 ml



Disease symptoms on leaves

**Bacterial wilt, Bacterial soft rot (Bacterial wilt) (Bacterial soft rot)**

**Treatment :** Spraying  
 (volume per liter)  
**(By drip irrigation or drenching Fruit Special 1 kg Give the amount of land per acre.)**



1) **Defend 2 gm** + Captan 2 gm + Streptocycline 6 gm / 50 L + **Spray Max-85** 1 ml  
 2) Copper oxychloride 2 gm + strepto cycline 6 gm / 50 L + **Spray Max-85** 1 ml  
**Drenching:** (volume per liter)  
 Copper oxychloride 3 gm + Valida mycine 2 ml + **Spray Max-85** 1 ml

**Sucking pest:**



Thrips      Aphids/Jassids,      Red mites,      White fly,      Leaf hopper

**Treatment :** (Volume per liter): **Rapid 2 ml** + **Spray Max-85** 1 ml

<b>Pest:</b>	<b>Insecticide: (Volume per liter of water)</b>
Fruit borer	Emamectin 1 gm + Dichlorvos 1 ml + <b>Spray Max-85</b> 1 ml
Fruit fly (golden fly)	Rapid 1 ml + Phenpropathrin 1 ml + Dichlorvos 1 ml + <b>Spray</b>
Fruit Sucking Moth (Kite)	<b>Max-85</b> 1 ml



# Harit Sanjivani Crop Schedule

## **Root Knot Nematode: Treatment :** (Volume per acre)

Trichoderma 1 kg + Paecilomyces 1 kg + Black jaggery 2 kg (mix all three in 10 liters of clean water and keep in a plastic bucket or plastic vessel a day)

On the second day, mix Soil Health Special 500 gm in 200 liters of water and mix the top 10 liters of draining and apply through drip irrigation or by drenching.



**Instructions :** 1) **Harit Sanjivani Fruit Special, Defend** can be mixed with any pesticides, insecticides, fungicides, Do not spray with only alkaline medicines such as Copper, Sulphour, Bordeaux mixture.

2) In every spraying **Spray Max-85** apply in the ratio of 1 ml per liter.

3) After 5<sup>th</sup> spray of fruit Special take in every 20 to 25 days **Fruit Special** 2gm + **Spray max-85** 1 ml per liter of water.

**(For banana crop schedule given by field trials, farmers experience and agricultural universities trials and the schedule can be change according to soil type and environment)**