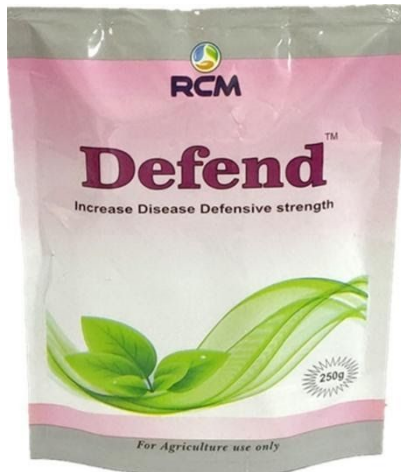


Defend



Smart Features of Defend

- **RCM-Defend** eradicates organisms causing Downy mildew and phytophthora in the plant system.
 - **RCM-Defend** can be used as bio stimulant to develop internal resistance against Oomycetes Class of fungi.
 - **RCM-Defend** being systemic in action, ensures better absorption.
 - **RCM-Defend** degraded product can be used by the plants as nutrients.
 - **RCM-Defend** is ecologically safe and environmentally friendly.
- **RCM-Defend** is a water-soluble formulation based on potassium salt for phosphorus acid.
 - **RCM-Defend** a product having systemic action working as a disease suppressor with protective & curative actions.
 - **RCM-Defend** is also very popular on grape, pomegranate, tomato, chili, potato, brinjal, cardamom, arecanut etc.
 - **RCM-Defend** is also very effective on cotton, soybean, all fruit crops, vegetable, and ornamental crops.
 - **RCM-Defend** is well suited for foliar application & soil drench.

Dosage:

- 2 gm of RCM-Defend powder is dissolve in 1 liter of clean water for all types of agricultural and vegetable & fruit crops.
- 500 gm RCM-Defend powder use for 1 acre through drip irrigation or drenching.

Precaution: Spray **RCM-Defend** preferably at evening in high Humidity & low temperature conditions.

Compatibility: RCM – Defend is compatible with almost all fungicides, insecticides & water-soluble fertilizers We recommend to go for jar test. check the compatibility of RCM – Defend with an input to be used.